



PRIME 95B

背面照射型 sCMOS カメラ Prime 95B (All Features)

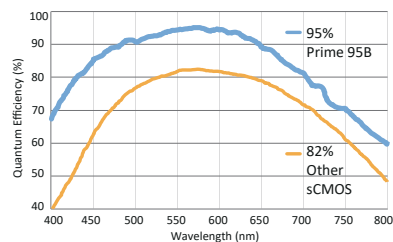
定価 490 万円 → 特価 298 万円!

- 95% Quantum Efficiency
- Back Illuminated
- 11µm x 11µm Pixel Area
- PrimeEnhance increases SNR 3-5X
- 1.6e- Read Noise (median)

■ハードウェア主要スペック
Image Sensor: GPixel GSense 144 BSI CMOS
Gen IV, Grade 1
Chip Size: 4200 x 1200
Pixel Size: 11µm x 11µm
Read Noise: 1.6e- (median)
Peak QE: >95%
Cooling: -10°C Air / 25°C Liquid (25°C ambient)
Bin2x2, A/D: 12/16bit, Full Well: 80,000e- (16bit)
I/F: PCIe/USB3.0 Lens Mount: C-mount

商談中

Frame Rate (PCIe interface)		
Array Size	16bit	12bit
1200 x 1200	40	80
1200 x 512	94	188



PRIME 95B 25MM

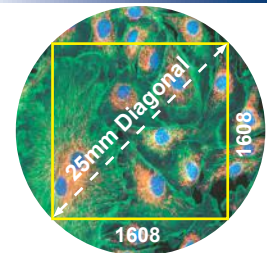
背面照射型 sCMOS カメラ Prime 95B 25mm

定価 495 万円 → 特価 298 万円!

- 95% Quantum Efficiency
- Back Illuminated
- 17.69mm x 17.69mm Sensor Area
- 11µm x 11µm Pixel Area
- PrimeEnhance increases SNR 3-5X
- 1.6e- Read Noise (median)

■ハードウェア主要スペック
Image Sensor: GPixel GSense 400 BSI CMOS
Gen IV, Grade 1
Chip Size: 1608 x 1608
Pixel Size: 11µm x 11µm
Read Noise: 1.6e- (median)
Peak QE: >95%
Cooling: -20°C Air / 25°C Liquid (25°C ambient)
Bin2x2, A/D: 12/16bit, Full Well: 80,000e- (16bit)
I/F: PCIe/USB3.0 Lens Mount: F-mount

商談中



PRIME BSI

背面照射型 sCMOS カメラ Prime BSI

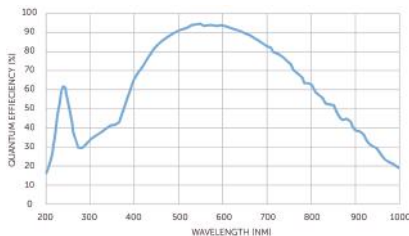
定価 325 万円 → 特価 230 万円!

- 95% Quantum Efficiency
- Back Illuminated
- 6.5µm x 6.5µm Pixel Area
- PrimeEnhance increases SNR 3-5X
- 1.6e- Read Noise (median)

■ハードウェア主要スペック
Image Sensor: Gpixel GSENSE 2020 BSI Scientific CMOS sensor
Chip Size: 2048 x 2048
Pixel Size: 6.5µm x 6.5µm
Read Noise: 1.6e- (median)
Peak QE: >95%
Cooling: -20°C Air / 30°C Liquid (30°C ambient)
Bin2x2, A/D: 16/12/11bit, Full Well: 45,000e-
I/F: PCIe/USB3.0 Lens Mount: C-mount

商談中

Array Size	Frame Rate		11-bit	
	16-bit / 12-bit	12-bit	PCI-E	USB
2048 x 2048	43	43	63	63
2048 x 1024	87	87	125	125



PRIME sCMOS

高性能 sCMOS カメラ Prime sCMOS

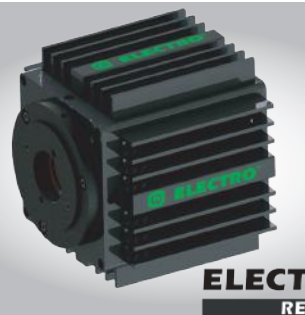
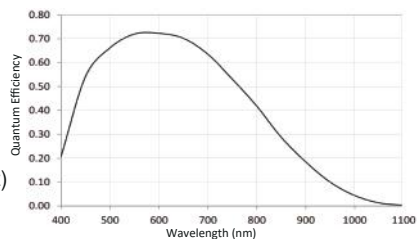
定価 240 万円 → 特価 150 万円!

- 4.2 Megapixel
- 6.5µm x 6.5µm Pixel Area
- PrimeEnhance increases SNR 3-5X
- 1.1e- Read Noise (median)

■ハードウェア主要スペック
Image Sensor: BAE CIS-2020F sCMOS
Chip Size: 2048 x 2048
Pixel Size: 6.5µm x 6.5µm
Read Noise: 1.1e- (median)
Peak QE: >72%
Frame Rate: 100fps @ 16bit, Full Frame
Cooling: -10°C Air / 25°C Liquid (30°C ambient)
Bin2x2, A/D: 16bit, Full Well: 30,000e-
I/F: PCIe/USB3.0 Lens Mount: C mount

売却済

Array Size	Frame Rate (PCIe interface)	
	PCIe	USB3.0
2048 x 2048	100	31
1024 x 1024	204	62
512 x 512	400	400



ELECTRO RETIGA

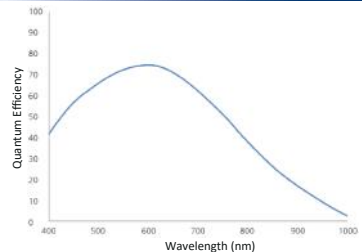
ゼロバイブレーション冷却 CCD カメラ ELECTRO

定価 90 万円 → 特価 60 万円!

- Designed for Electrophysiology
- Vibration and Interference Free
- High Sensitivity – Cooled/Low Noise
- Frame Rate : 22fps@full resolutio

■ハードウェア主要スペック
Image Sensor: SONY ICX825 mono
ChipSize: 1360 x 1024
Pixel Size: 6.45µm x 6.45µm
Read Noise: 5.5e-(RMS)
Peak QE: 75%@600nm
Exposure: 25us-5sec
Cooling: 0°C Fanless(22°C ambient)
A/D: 14bit, USB3.0, 50MHzx2
Lens Mount: C mount

1台限り



Cool SNAP DYNO

2.8MP 冷却 CCD カメラ Cool SNAP DYNO

定価 98 万円 → 特価 80 万円!

Primary Applications

- Fixed Cell Imaging
- Live Cell Imaging
- Time Lapse Imaging
- Slide Scanning

■ハードウェア主要スペック
Image Sensor: SONY ICX674 Mono
ChipSize: 1920 x 1460
Pixel Size: 4.54µm x 4.54µm
Read Noise: 5.2e-(RMS)
Peak QE: 75%@600nm
Cooling: -12°C Air (22°C Ambient)
A/D: 14bit, USB3.0, 50MHzx2
Frame Rate : 14.4fps@full resolutio
Lens Mount: C mount

2台限り

